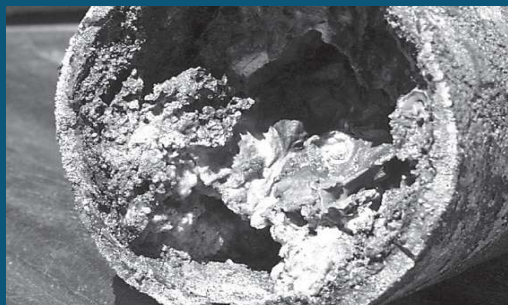


Clean and healthy Creeks and rivers are important to Tippecanoe County. Fats, oils, and grease from restaurants and food service facilities can cause sewer line blockages that may result in sewage overflow into your facility and into storm drains. Unlike water in sanitary sewers (from sinks and toilets), water in storm drains is not treated before entering our waterways and should never contain washwater, trash, grease or other materials.

You would never dump oil and trash into the river, so don't let it enter the storm drains. Follow these tips to help prevent water pollution.



For more information, please contact

**Tippecanoe County
Partnership for Water Quality**
c/o Surveyor's Office
20 N. Third Street Lafayette,
Indiana 47901
765-423-9228

The Partnership consists of the following entities:

BattleGround

Dayton

IvyTech

Lafayette

Purdue University

Tippecanoe County

WestLafayette

Help Prevent River Pollution:

Tips for the Food Service Industry



**Tippecanoe County
Partnership for Water Quality**

**Stormwater Pollution
Prevention Program**

Best Kitchen Practices

Food Waste Disposal

- Scrape food waste off of plates, utensils, pots, food preparation, and cooking areas and dispose of it in the trash.
- Never put food waste down the drain. Food scraps often contain grease, which can clog sewer pipes and result in sewage backups and overflows.

Grease & Oil Disposal

- Never put oil or grease down the drain. Contain grease and oil by using covered grease storage containers or installing a grease interceptor.
- Never overfill your grease storage container or transport it without a cover.
- Grease control devices must be emptied and cleaned by permitted companies.



Minor Spill Cleanup

- Always use dry cleanup methods, such as a rag, damp mop, or broom.
- Never hose a spill into the street, gutter, or storm drain.



Major Spill Cleanup

- Have spill containment and clean up kits readily available, and train all employees on how to use them.
- Immediately contain and clean the spill using dry methods.

Washwater Disposal

- Dispose of washwater in a mop sink or an area with a floor drain.
- Never dispose of washwater in the street, gutter, or storm drain.

Dumpster Cleanup

- Pick up all debris around the dumpster
- Always keep the lid on the dumpster closed.
- Never pour liquids into the dumpster or hose it out.



Floor Mat Cleaning

- Sweep the floor mats regularly, discarding the debris into the trash.
- Hose off the mats in a mop sink, at a floor drain, or in an outdoor area that can contain the water.
- Never hose the mats in an area where the wastewater can flow to the street, gutter, or storm drain.

